



Technical Bulletin
Parts and Service news

TB-56-99
5-7-99

To: All Harlan Tractor/Parts Customers

Subject: 02075-0195 Dual Caliper Brake Conversion Kit

Harlan has received several requests for a dual rear caliper brake conversion kit. This kit will add a second set of rear brake calipers to the rear axle and de-activate the front drum brake system

The kit contains all the brake lines, hoses, calipers, pads and brackets to install the additional brake calipers on to your tractor.



Dual Rear Calipers Installed



Front Side Dual Rear Caliper



Back Side Dual Rear Caliper



Master Cyl. with Brake line installed

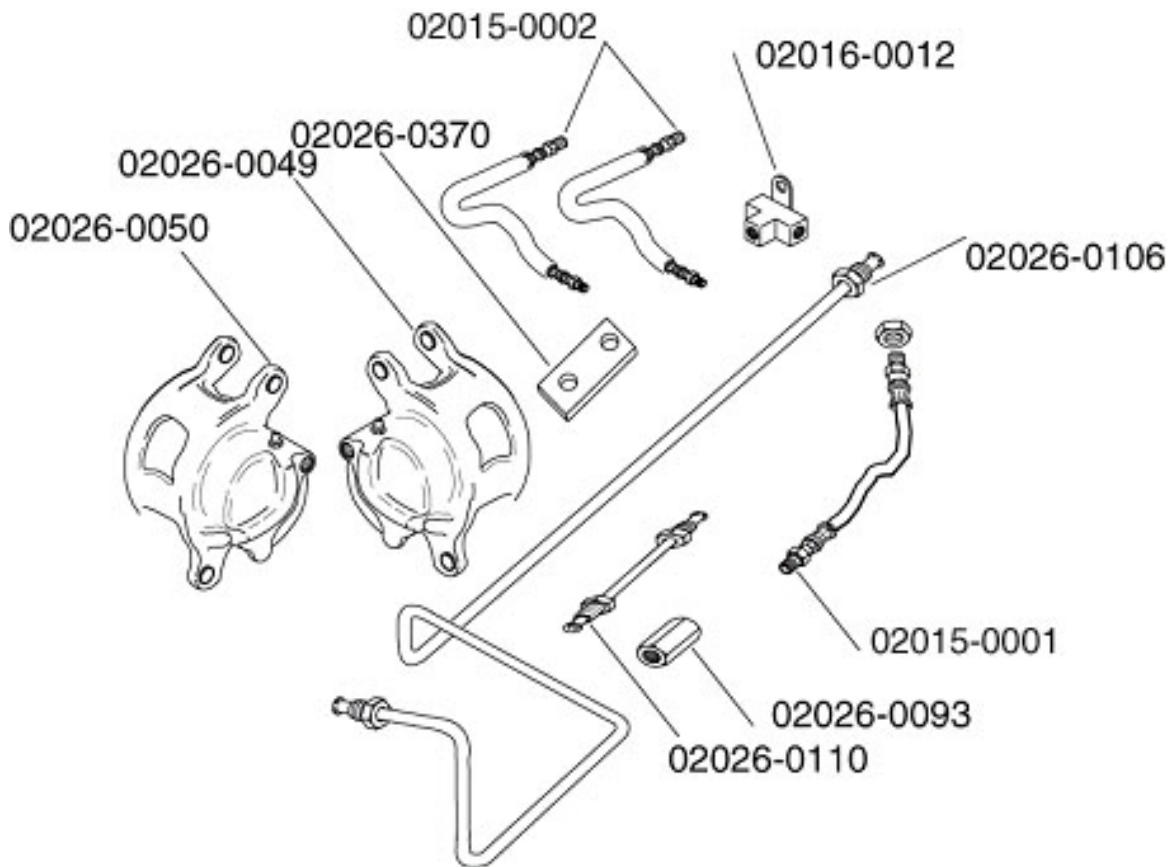


Technical Bulletin

Parts and Service news

TB-56-99

5-7-99



The following instructions will help guide you through the assembly procedure for installing this kit.

- 1.) With the unit cold, the transmission in park or neutral and the park brake set block the front wheels and jack-up the rear wheels of the tractor. Install the 02015-0002 brake hoses onto the new brake calipers with brake pads installed. Remove either rear wheel assembly and install the new caliper as required for the side being worked on. Caution before installing 02026-0062 brake pins mounting the rear calipers check to insure the threads are clean and in good condition and be sure not to over tighten when installing brake pins. Repeat on other side of the axle. Ensure the bleeder screws point upwards.
- 2.) Now block the right side front and rear wheels. Jack the left side of the tractor up to allow full access to the under side of the unit.



Technical Bulletin

Parts and Service news

TB-56-99

5-7-99

3.) On the underside of the unit you will observe the current brake line held in place by a series of metal clamps or loops mounted on 1/4-inch studs. Open the clamps and add the 02026-0106 brake line in with the current brake line and re-tighten clamps. Be careful when installing brake line not to bend or deform the end of the brake line that is routed up and over the frame rail to the master cylinder.

4.) On the rear axle remove the current brake tee and install the 02026-0370 brake "T" mounting tab, attach the current and additional brake "T" to the mounting tab. Connect the 02015-0002 brake lines from step #1 to the new brake "T" and using a brake line wrench, tighten completely. Now attach the 02015-0001 brake hose to the 02026-0106 Brake line in step #3 and then to the new brake "T" in step #4.

Note: If you tractor is a 112-inch frame model before attaching the 02015-0001 brake hose you will need to attach the 02026-0093 union fitting and the 02026-0110 brake line extension to the end of the 02026-0106 brake line to lengthen it enough to reach the rear axle.

5.) Now move to the engine compartment of the tractor and find the master cylinder. Remove the brake line for the front brake assembly from the "T" connecting the brake light switch and the brake line to the master cylinder, this brake line can be removed completely or simply bent out of the way. Neither the front brake lines nor front brake assemblies need to be removed for the new brake system to operate correctly. Remove the check valve from the Master Cylinder.

6.) Attach the 02026-0106 brake line to the master cylinder using the 02016-0014 fitting adapter to attach the brake line to the brake "T" at the master cylinder.